

# Initial Connection to Velocity Software's zPRO Demo

Velocity Software provides a cloud architecture for education and demonstration purposes. This allows users to create CMS servers and Linux servers using our zPRO product, and then use those servers for the duration of their self study education. It also allows for demonstration of our zPRO product.

zPRO is Velocity Software's Cloud Enablement product, allowing end users to define and manage their servers without having z/VM knowledge. zPRO supports a private cloud for z/VM that includes support for Linux servers, CMS users, and 2nd level z/VM systems

This paper describes the steps needed to establish connectivity to our demo system for zPRO. It covers connectivity to:

- zPRO via a browser
- z/VM second level or CMS guest via x3270 or TN3270
- Linux guest via putty

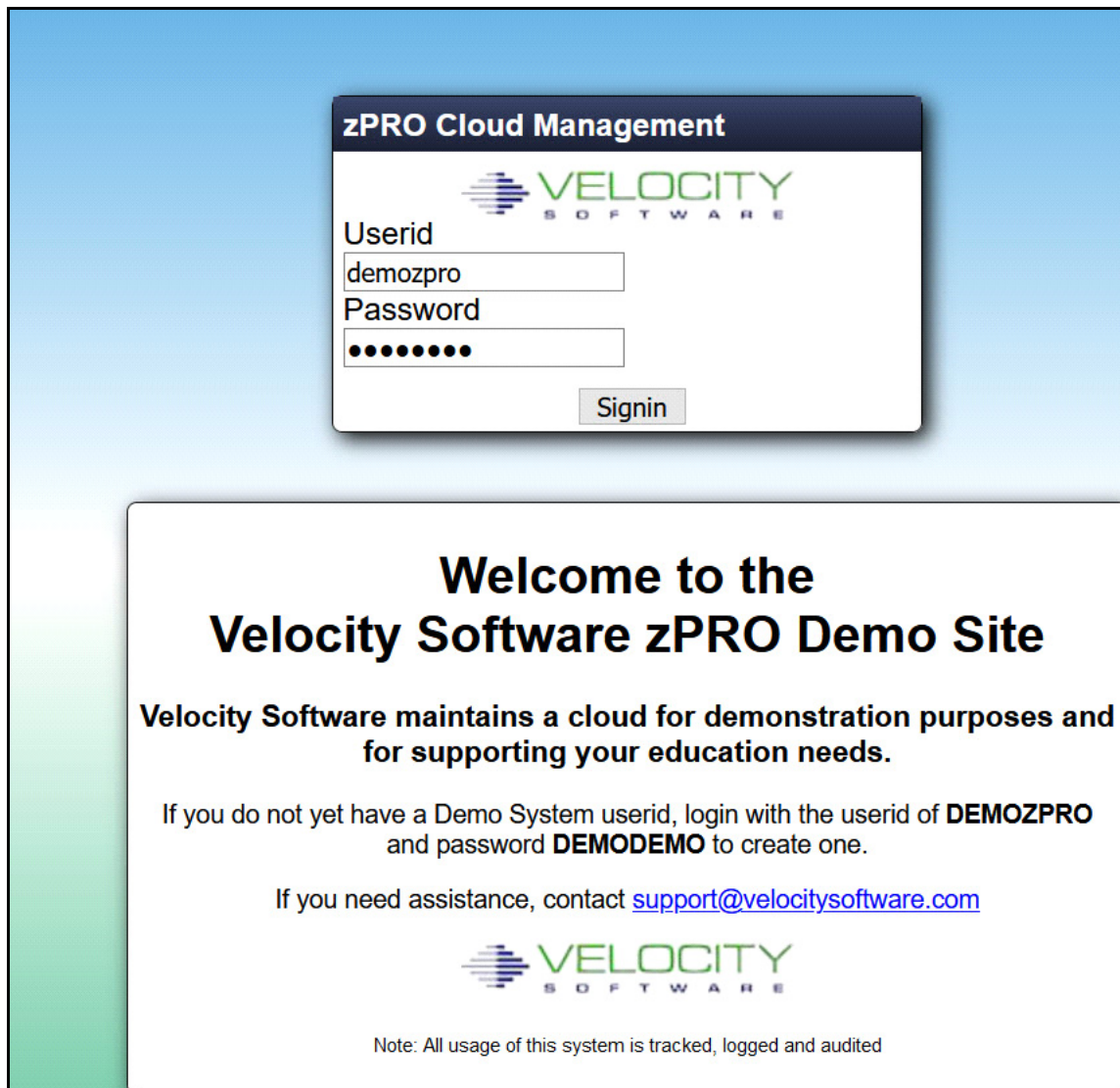
## Connecting to zPRO via a browser

To access the Velocity Software cloud, click on <https://demo.velocitysoftware.com/zpro/>.

You will get a logon screen as shown in Figure 1-1. You will need to create your own zPRO user ID that will allow you to clone Linux, Oracle Linux, CMS, and 2nd level VM guests.

Enter the user ID (demozpro) and password (demodemo). The "DEMOZPRO" user ID is a specific user ID available only for purpose of creating a zPRO user ID for you to use for education of Linux and CMS on the mainframe and demonstration of our zPRO product.

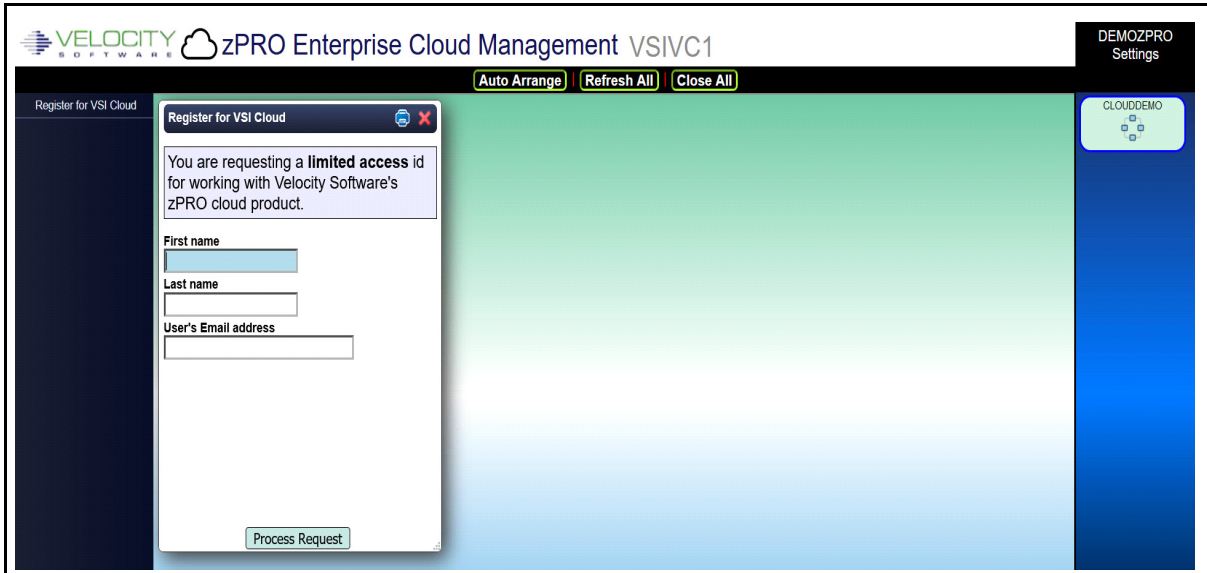
The first step is to complete the logon process. Point your browser to our zPRO system <https://demo.velocitysoftware.com/zpro/>. Enter the User ID demozpro and password demodemo in the screen shown in Figure 1-1..



*Figure 1-1 Initial Logon Panel*

Again, this is a special ID that will only allow you to create your own User ID for zPRO on our demo system.

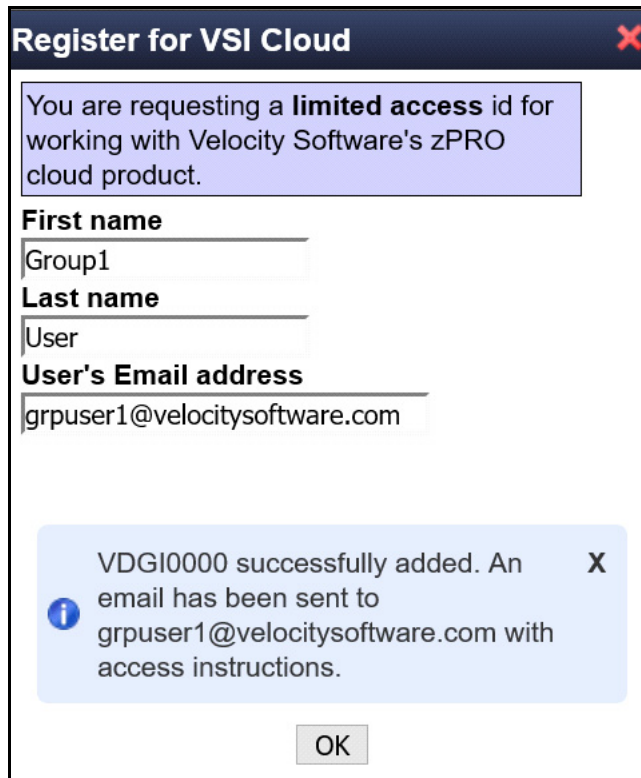
After signon, to register for an user ID for the Velocity Software Cloud, enter your name and email address. and click on Process Request as shown in Figure 1-2.



*Figure 1-2 Register for a zPRO User ID*

You will receive an email message giving you the zPRO user ID that has been created as shown in Figure 1-3. You will also receive a message in your email with the name of the zPRO user ID that has been created and a password that has been assigned. You will need the password to logon.

**Note:** If you have previously applied for a DEMOZPRO User ID with that email, you will receive a message that you already have an ID. If you need the password reset, please contact [support@velocitysoftware.com](mailto:support@velocitysoftware.com).



*Figure 1-3 Message that your ID has been created*

The email will give you your own zPRO user ID for use on our demo system as shown in Figure 1-4.

Dear Group1,

A new zPRO ID has been generated on your behalf. You may connect to this id by:

- Pointing your browser to <https://demo.velocitysoftware.com/zpro/>
- Use user-id: VDGI0000
- Use xxxxxxxx as the password. You will be required to change the password before you will be allowed to login.

If you have difficulty using this user-id, please contact our system administrator.

Regards,

System Administrator  
Velocity Software, Inc.  
sysadmin@velocitysoftware.com

Figure 1-4 Sample email for registering for zPRO ID

Go back to <https://demo.velocitysoftware.com/zpro/>. Logon with your ID and password as shown in Figure 1-5.

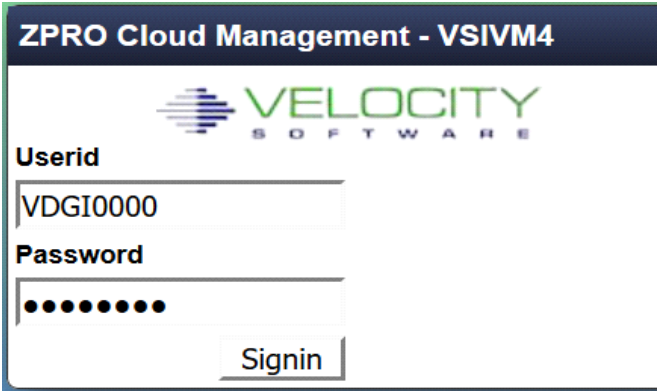


Figure 1-5 Sign in with new zPRO User ID

First, you will be asked to change your password as shown in Figure 1-6.

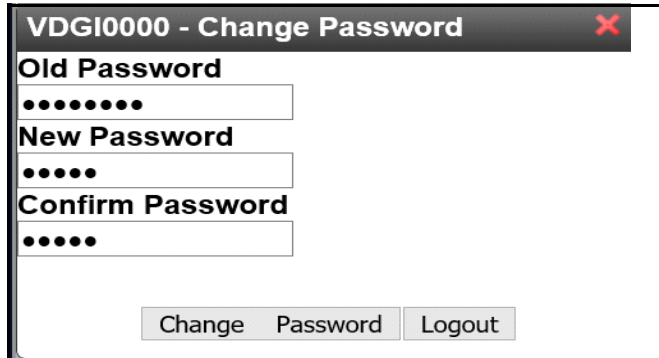


Figure 1-6 Change password on first logon

When you get the message shown in Figure 1-7, click on OK and you will be presented with the menu shown in Figure 1-8.

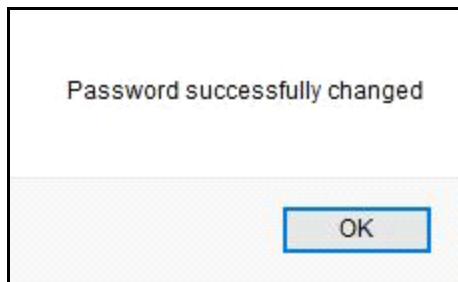


Figure 1-7 Message to show that password was changed

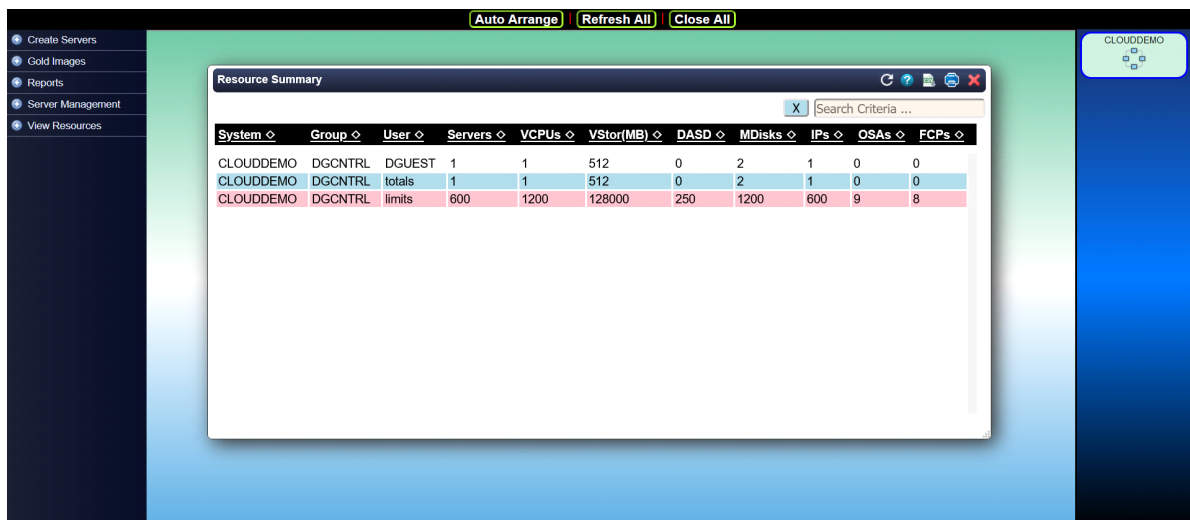


Figure 1-8 . Initial zPRO Panel

This panel gives you:

- On the left, a list of the self service functions available to you

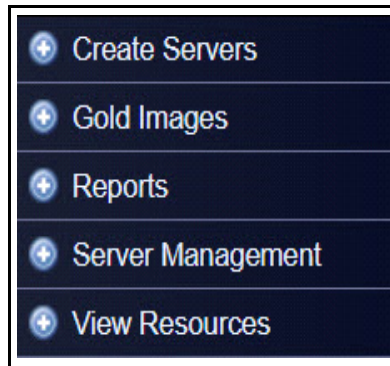
- A panel showing the resource usage of the resources available to your group
- 

There are three collections of functions available to you,

<b>Group</b>	<b>Description</b>
Create Servers	Contains functions that relate to the cloning process or generation of new servers.
Gold Images	Contains a function to list the golden system images
Reports	Contains functions to provide information about your use
Server Management	Contains functions to modify a server's definition and/or operational characteristics.
View Resources	Contains functions related to the management and reporting of zPRO managed resource consumption.

*Figure 1-9 Groups of functions available for your use*

The menu (Figure 1-10) on the left side shows these groups and the pull down options are shown in Figure 1-11.



*Figure 1-10 Menu for zPRO End Users*

At the top of the panel there are three functions (Auto Arrange, Refresh All and Close All) allow you to arrange the panels on the right in order vertically or to close all panels. These options may be useful once you use the functions in the pull down menus below.

The pull-down expansion of each of these groups is shown in Figure 1-11.

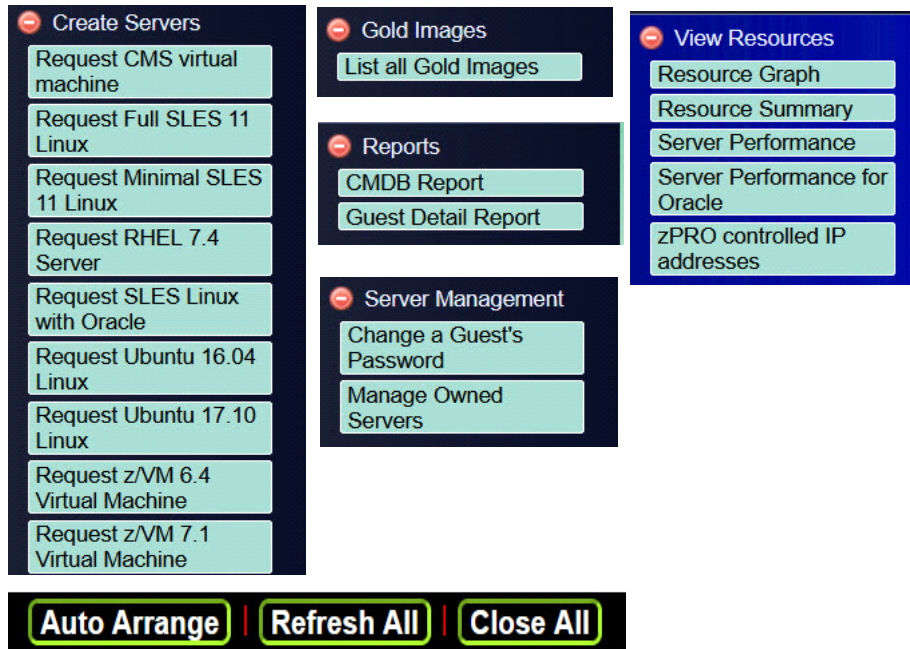


Figure 1-11 Functions that could be used by End-user and zPRO Administrator

**Note:** There are several options available under the Settings Heading Pull Down on the top right side as shown in Figure 1-12.

You can refresh the job queue, view the audit log, report a bug and logout using this pull down menu.

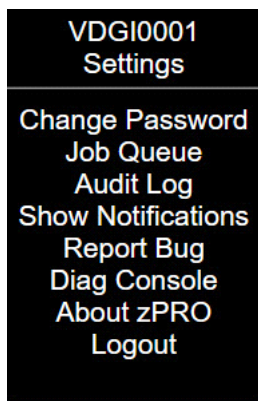


Figure 1-12 Setting options

**Note:** zPRO will automatically log you out after 15 minutes of non use. You will receive a warning at 14 minutes which asks if you want to continue.

For more information on zPRO functions, review the paper on <http://velocitysoftware.com/educate>



## User IDs and Golden Images

Before you start, you need to understand which User IDs and passwords you will need when using zPRO.

- a. You will be given a zPRO User ID and password to logon on to zPRO. You must also know the url to access zPRO via a browser. (*<https://demo.velocitysoftware.com/zpro/>*)
- b. When you create a CMS server, you will be assigned a Server ID and password in the create function. You will receive this in an email. You will use this with a 3270 emulator.
- c. When you create a Linux server, you will be assigned a port number to use with an SSL connection. The Host name to use is *[zcloud.velocitysoftware.com](https://zcloud.velocitysoftware.com)*. You should not need to access this server with a 3270 emulator. You will be accessing the Linux guest through a SSL connection like putty. You will use the IP address for the SSL connection that is provided in the email. The root password for the Linux guest that was used when the Golden Image will be sent to you in an email.

The zPRO user functions available are:

- Request a CMS virtual machine
- Request a Minimal Linux Server
- Request a Oracle Linux Server
- Request a Ubuntu Server
- Request an Linux Server running an Oracle database
- Request a 2nd Level VM guest
- Start/Stop a server
- Delete a server
- Change a server's password
- Display resource graph
- Display resource usage
- Display IP addresses
- Display server performance data (zVIEW)
- View the Audit Log

There is a paper that describes each of these functions in detail at [www.velocitysoftware.com/educate](http://www.velocitysoftware.com/educate)

## Access to z/VM for CMS or 2nd level VM system

You must have a 3270 emulator installed on your laptop to access our z/VM system. This section describes how to connect using x3270 or TN3270.

## Setting up your Windows PC with x3270 (wc3270) Emulator and OpenSSL

First you need to install OpenSSL for this software. Download and execute OpenSSL for Windows for secure (SSL) connections. Take all the installation defaults.

[https://slproweb.com/download/Win64OpenSSL\\_Light-1\\_1\\_0f.exe](https://slproweb.com/download/Win64OpenSSL_Light-1_1_0f.exe)

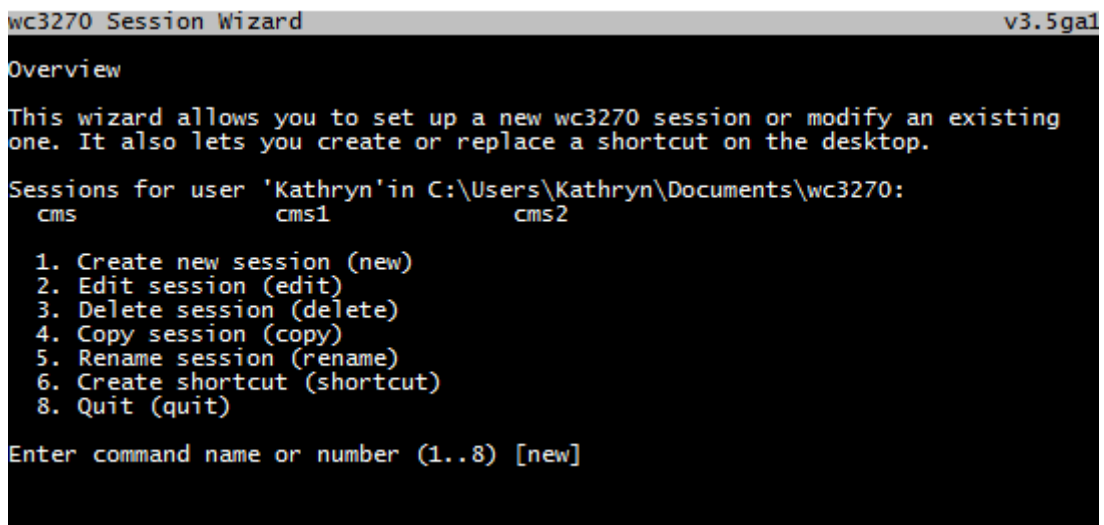
x3270 is a freeware/open source program available at

<https://sourceforge.net/projects/x3270/>

Download the file and then execute it.

wc3270-3.5ga10-setup.exe

This wizard will display this screen as shown in Figure 1-13.



```
wc3270 Session Wizard v3.5ga10
Overview
This wizard allows you to set up a new wc3270 session or modify an existing
one. It also lets you create or replace a shortcut on the desktop.
Sessions for user 'Kathryn' in C:\Users\Kathryn\Documents\wc3270:
  cms      cms1      cms2
1. Create new session (new)
2. Edit session (edit)
3. Delete session (delete)
4. Copy session (copy)
5. Rename session (rename)
6. Create shortcut (shortcut)
8. Quit (quit)
Enter command name or number (1..8) [new]
```

Figure 1-13 x3270 installation panel

Follow these steps:

- Choose option 1

Enter session name e.g. DEMO

- Enter hostname as: demo.velocitysoftware.com

On the Options list:

- Choose 3. TCP Port

Enter 992

- Choose 9. SSL Tunnel

Enter Y

- Tap enter to complete options setup
- Create Sessions – Enter Y

- Create Shortcut – Enter Y
- Enter 8 (quit)

This will complete the installation of the emulator. Then,

- Double click (or execute) on the shortcut you just created

You should now have the logon screen shown in Figure 1-14.

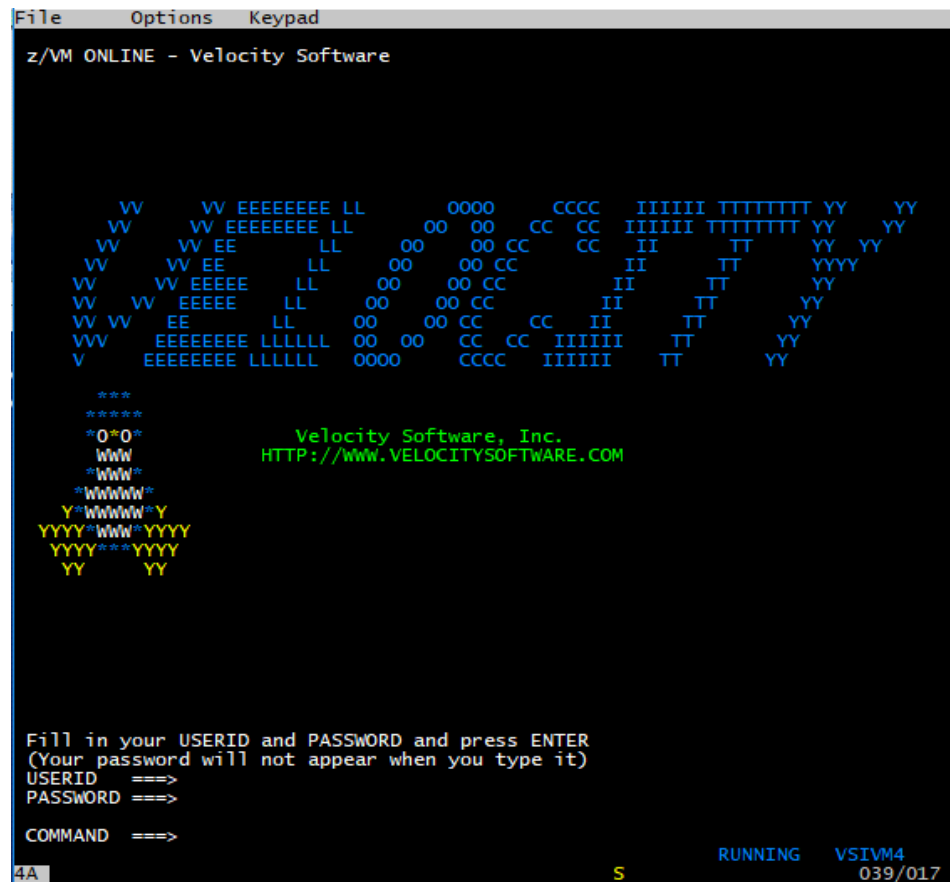


Figure 1-14 3270 Logon screen

This gives you access to your CMS machine which you will create using zPRO. You will have an CMS or z/VM 2nd level user ID and password to connect to your VM or CMS guest. You will enter at the bottom of the screen.

logon xxxxxxxx where xxxxxxxx is your user ID

You cannot logon until after you create your CMS or z/VM 2nd level guest

First, become familiar with the special keys using by z/VM and CMS. Go to the top of the x3270 emulator screen and click on Keypad. This will bring up the screen shown in Figure 1-15.

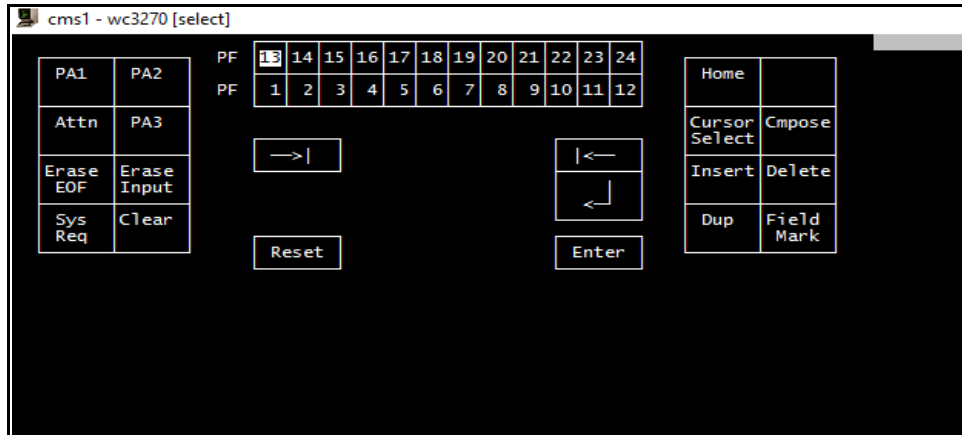


Figure 1-15 Keypad for z3270 emulator

There are 2 keys you will use often as well as the program function keys

The Clear key is necessary for clearing CP messages and CMS messages. You will use the CLEAR key if the screen fills up and you see HOLDING or MORE at the bottom right. Click on the CLEAR key to get to the next page.

RESET KEY is for solving keyboard problems that WILL arise. If you type in an area of the screen that is protected, some form of an "X" will show up at the bottom of the screen indicating that the keyboard is locked. The RESET key will clear this.

**Note:** There are several things you should be aware when logging on the z/VM:

- You will be prompted to change your password for this first logon.
- The first screen will have VM read at the bottom right, hit enter and it will say READY on the left and at the bottom right it will say RUNNING. You are now ready to try CMS commands.
- If you have successfully logged and get disconnected or enter DISC to disconnect, the next time you logon on you will get a screen that says CP READ. To get back to CMS just enter B for Begin and you will be taken to the place where you logged off.
- If you lose connectivity and the system thinks you are already logged on you will get a message the says User ID DEMOxxxx is already connected to GRAF xxxx. In this case, you issue the command,  
LOGON DEMOxxxx here

It will then ask for the password, and you will be re-connected. If you are sharing this ID, the other person will immediately be logged off. So use carefully.

## Using TN3270 as the Emulator

This is a usually chargeable product available from several sources. We used the VISTA TN3270 from <http://www.tombrennansoftware.com/>.

When setting up your TN3270 session, as shown in Figure 1-16, use the following:

- Host IP Name: demo.velocitysoftware.com
- IP Port: 992
- SSL/TLS: TLS V1.2

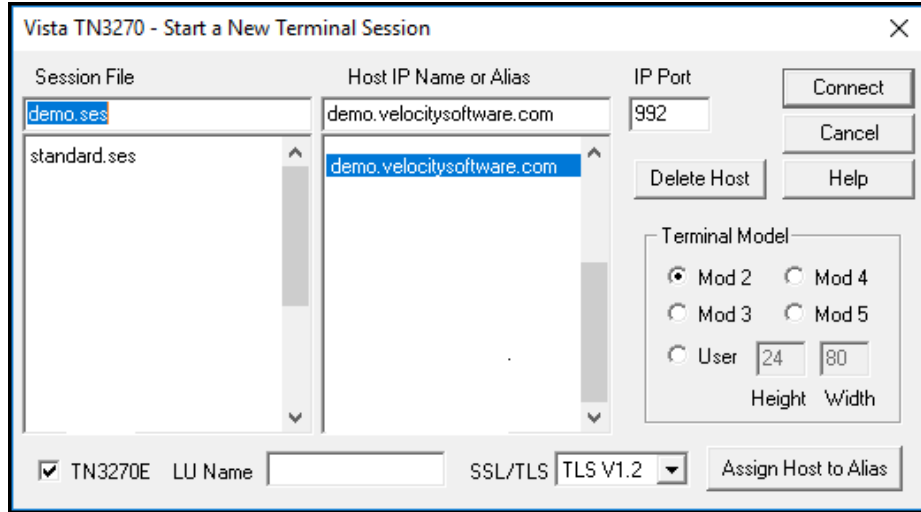


Figure 1-16 TN3270 new session panel

This will bring up the screen shown in Figure 1-17.

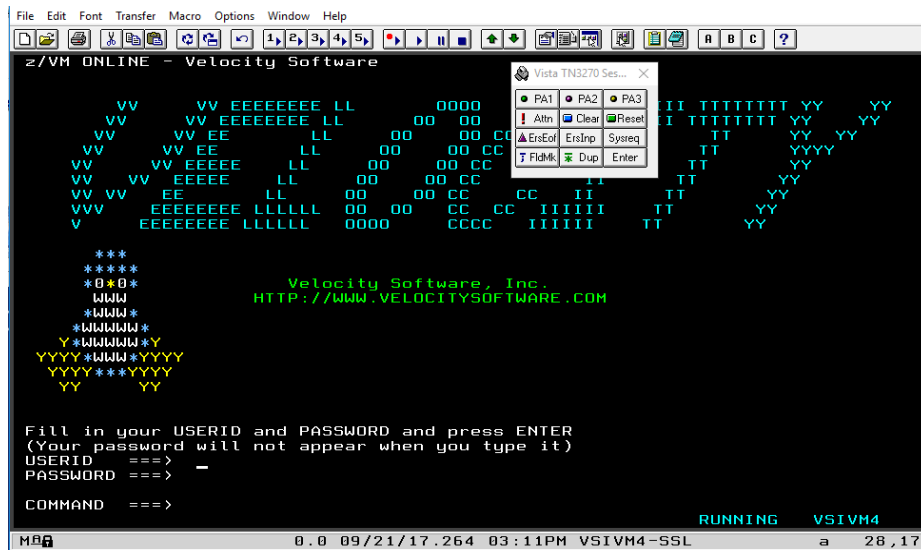


Figure 1-17 Vista TN3270 Emulator

The special keys needed for VM and CMS are on the top of the TN3270 emulator screen. Click on Show Keypad (7th box from the right)

There are 2 keys you will use often as well as the program function keys:

- The Clear key is necessary for clearing CP messages and CMS messages. You will use the CLEAR key if the screen fills up and you see HOLDING or MORE at the bottom right. Click on the CLEAR key to get to the next page.
- RESET KEY is for solving keyboard problems that WILL arise. If you type in an area of the screen that is protected, some form of an "X" will show up at the bottom of the screen indicating that the keyboard is locked. The RESET key will clear this.

Remember, for zVM or CMS accessed by TN3270 or x3270 you will use the VM user ID and password in the email you received or if you cloned it yourself you have specified the VM user ID and password in the request panel.

## Sample of email for CMS Server

This is a sample of the email you will receive when you create a CMS server.

A new CMS user-id has been generated on your behalf. You may connect to this id by

- Using a TN3270 monitor emulator. A free 3270 emulator can be downloaded at <https://sourceforge.net/directory/os:windows/?q=x3270>

You will also need OpenSSL for a secure connection:  
[https://slproweb.com/download/Win64OpenSSL\\_Light-1\\_1\\_0f.exe](https://slproweb.com/download/Win64OpenSSL_Light-1_1_0f.exe)

- Point your emulator to DEMO.VELOCITYSOFTWARE.COM. You will need to configure the port number, use port 992, and select SSL TLS V1.2.
- Use an ID of ZSXL0130
- Use xxxxxxxx as the password. You will be required to change the password before you will be allowed to login.

If you have difficulty using this user-id, please contact our system administrator.

Regards,

System Administrator  
 Velocity Software, Inc.  
[sysadmin@velocitysoftware.com](mailto:sysadmin@velocitysoftware.com)

*Figure 1-18 Sample of email received when you create a CMS Server*

## Access to a Linux guest via putty

To access a Linux guest running under z/VM, we use putty. Download putty.exe from [www.putty.org](http://www.putty.org).

When you click on the putty icon, you will get a panel as shown in Figure 1-19.

You need to key in the host name and the port number to access your Linux guest.

These will be included in an email you will receive, once the cloning process of the Linux guest is complete. You will enter the host name and the port number as shown in Figure 1-19.

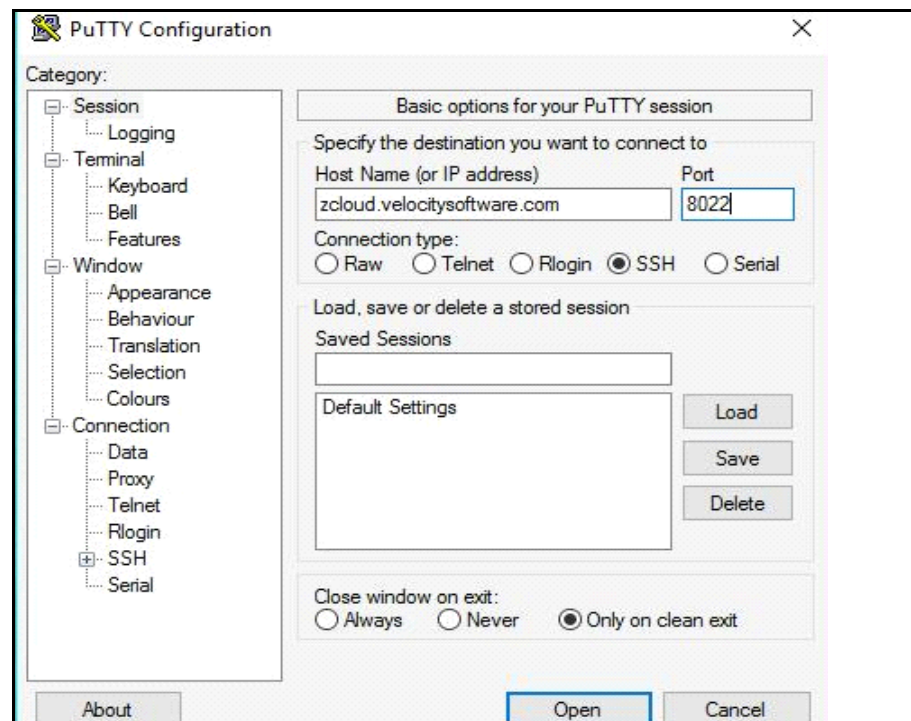


Figure 1-19 Using Putty to connect to Linux Server

Figure 1-20 shows the message you will get the first time you connect via putty to the Linux server. Click yes and you will get the logon prompt as shown in Figure 1-21.

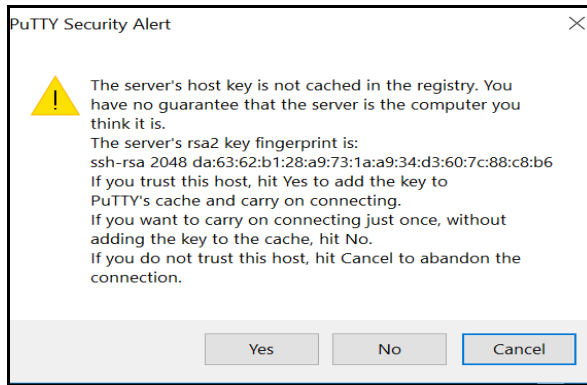


Figure 1-20 Putty message for first time connection

Logon with Linux User ID *root* or *vsidemo*. Password for both is xxxxxxxx. If putty closes, Linux may not have completely booted, please try again.

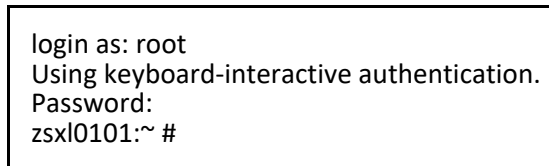


Figure 1-21 Logging on to Linux Server

You will then be logged on to your Linux guest.

**Note:** If you experience difficulty with connectivity to our system, please contact our system administrator at [sysadmin@velocitysoftware.com](mailto:sysadmin@velocitysoftware.com)



## Sample of email for Linux guest

This is a sample of the email you will get when you create a Linux guest:

A new Linux server has been generated on your behalf. You may connect to this id by

- using putty, set the host name to `zcloud.velocitysoftware.com`
- configure the port to 8042
- you can sign into the "root" id using a password of "xxxxxxx".

To access the Apache web services running in this system, point your browser to `http://zcloud.velocitysoftware.com:8048`

If you have difficulty using this user-id, please contact our system administrator.

Regards,

System Administrator  
Velocity Software, Inc.  
`sysadmin@velocitysoftware.com`

*Figure 1-22 Sample of email received when creating a Linux guest*

---

Please direct any comments or questions you may have about zVPS to:

**Velocity Software, Inc.**  
zVPS Product Manager  
PO Box 390640  
Mountain View, CA 94039-0640

TEL: (650) 964-8867  
FAX: (650) 964-9012

### **Velocity Software Contact Information:**

`SUPPORT@VelocitySoftware.com`

Copyright 2020 Velocity Software, Inc. All Rights Reserved.

ESAMAP, ESAMON, ESAWRITE, ESAWEB, ESATCP, ESALPS, zALERT, zMON, zMAP, zOPERATOR, zPRO, zTCP, zTUNE, zVIEW, zVPS, zVWS and zWRITE, are trademarks of Velocity Software, Inc.

All other products and/or company names are trademarks or registered trademarks of their respective owners.

